



Sunsynk Elite HYB 1P IP65



DATASHEET

SS-3.6kW-ELITE-HYB-1P-IP65-00

SS-5kW-ELITE-HYB-1P-IP65-00

SS-7kW-ELITE-HYB-1P-IP65-00

www.sunsynk.com
sales@sunsynk.com
customerservices@sunsynk.com

Technical Specification

Note

Approvals and certification are subject to change without prior notice. Please confirm the current status with Sunsynk before placing an order.

Model	SS-3.6kW-ELITE-HYB-1P-IP65-00	SS-5kW-ELITE-HYB-1P-IP65-00	SS-7kW-ELITE-HYB-1P-IP65-00
Battery Input Data			
Battery Type	LiFePO4		
Battery Voltage	40-60V		
Max. Charging Current	90A	120A	175A
Max. Discharging Current	90A	120A	175A
Charging Strategy for Li-Ion Battery	Self-Adaption to BMS		
Number of Battery Input	1		
PV String Input Data			
Max. PV Access Power	7200W	10000W	14000W
Max. PV Input Power	5760W	8000W	11200W
Max. PV Input Voltage	500V		
Start-Up Voltage	125V		
PV Input Voltage Range	125-500V		
MPPT Voltage Range	150-425V		
Full Load MPPT Voltage Range	300-425V	200-425V	
Rated PV Input Voltage	370V		
Max. Operating PV Input Current	18+18A	32+32A	
Max. Input Short-Circuit Current	27+27A	48+48A	
No. of MPPT Trackers/ No. of String MPPT Tracker	2/1+1	2/2+2	
Max. Inverter Backfeed Current to the Array	0		
AC Input/Output Data			
Rated AC Input/Output Active Power	3600W	5000W	7000W
Max. AC Input/Output Apparent Power	3960VA	5500VA	7700VA
Peak Power (Off-Grid)	2 Times of Rated Power, 10s		
Rated AC Input/Output Current	15.7A	21.7A	30.5A
Max. AC Input/Output Current	17.2A	23.9A	33.5A
Max. Continuous AC Passthrough (Grid to Load)	35A		50A
Max. Output Fault Current	36A	50A	70A
Max. Output Overcurrent Protection	80A		140A
Rated Input/Output Voltage/Range	230V 0.85Un-1.1Un		
Grid Connection Form	L+N+PE		
Rated Input/Output Grid Frequency/Range	50Hz/45Hz-55Hz		
Power Factor Adjustment Range	0.8 Leading to 0.8 Lagging		
Total Current Harmonic Distortion THDi	<3% (of Nominal Power)		
DC Injection Current	<0.5%In		

Model	SS-3.6kW-ELITE-HYB-1P-IP65-00	SS-5kW-ELITE-HYB-1P-IP65-00	SS-7kW-ELITE-HYB-1P-IP65-00
Efficiency			
Max. Efficiency	97.60%		
Euro Efficiency	96.50%		
MPPT Efficiency	>99%		
Equipment Protection			
Integrated	DC Reverse Polarity Protection, AC Output Over-Current Protection, AC Output Over-Voltage Protection, AC Output Short Circuit Protection, Thermal Protection, Insulation Impedance Detection, DC Component Monitoring, Arc Fault Circuit Interrupter (AFCI) (Optional), Anti-Islanding Protection, DC Switch, Residual Current Detection		
Surge Protection Level	TYPE II(DC), TYPE II(AC)		
Interface			
Display	LCD+LED		
Communication Interface	RS232, RS485, CAN		
Monitor Mode	GPRS/Wi-Fi/Bluetooth/4G/LAN (Optional)		
General Data			
Operating Temperature Range	-40 to +60°C, >45°C Derating		
Permissible Ambient Humidity	0-100%		
Permissible Altitude	2000m		
Noise	<30dB(A)		
Ingress Protection (IP) Rating	IP65		
Inverter Topology	Non-Isolated		
Over-Voltage Category	OVC II(DC), OVC III(AC)		
Cabinet Size (WxHxD)	720x399.2x256mm (Excluding Connectors & Brackets)		
Weight	31.6kg		
Type of Cooling	Intelligent Air Cooling		
Certifications	Approvals and certifications are subject to change without prior notice. Please confirm the current status with Sunsynk before placing an order.		

Battery Pack Accessories

Model	Parts	Description
SS-5.1kWh-ELITE-BATT-1P-IP65-00 (Individual Package)	5.12kWh Battery Module (Standard Configuration)	Stackable battery module, ranging from 5.12kWh to 30.72kWh, allowing up to six 5.12kWh modules to be installed.
SS-5.1kWh-ELITE-BMS+BASE-1P-IP65-00 (Individual Package)	Power Distribution Unit (Included)	Required to connect battery modules to the hybrid inverter. Each PDU supports up to 6 battery modules (30.72kWh).
	Base (Included)	The bottom support seat.

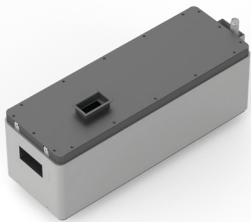
SS-5.1kWh-ELITE-BATT-1P-IP65-00



Details

5.12kWh, 720x255x300mm (WxDxH), 55kg

SS-5.1kWh-ELITE-BMS+BASE-1P-IP65-00



Details

720x255x228mm (WxDxH), 15kg
Built-In Circuit Breaker 250A 2P, 1000Vdc



Details

720x255x228mm (WxDxH), 15kg



Details

Pair of 2/0AWG DC power cable & RJ45 communication cable for external battery expansion of SS-5.1kWh-ELITE-BMS+BASE-1P-IP65-00, power cable one end has a waterproof terminal, communication cable both ends have waterproof terminals. The cable length can be customised based on customer requirements, default length is 1500mm.



Contact Us

Call +44 151 832 4300 **Email** sales@sunsynk.com **Website** www.sunsynk.com

- Address**
- HK** Room 702-704, 7/F Texwood Plaza, 6 How Ming Street, Kwun Tong, Kowloon, Hong Kong
 - UK** Sunsynk UK Ltd, 17 Turnstone Business Park, Mulberry Avenue, Widnes, Cheshire, WA8 0WN
 - SA** Unit 2, 3 & 4, 80 Highview Blvd, Ferndale, Randburg, 2160, South Africa
 - NL** Sunsynk NL BV, Henri Wijnmalenweg 8, 5657 EP Eindhoven, Netherlands
 - AU** Level 1, 982-988 Wellington Street, West Perth WA 6005, Australia
 - ES** Tafetana, 32 P.I. Las Andoriñas 38639 Las Chafiras Santa Cruz de Tenerife
 - US** 100 S. Ashley Drive, Suite 600, Tampa, Florida, 33602, United States of America